



# ALL-ELECTRIC COMPACT LOADERS

T7X





# THE ALTERNATIVE POWER SOLUTION THAT REALLY WORKS

Battery powered with no hydraulics, the Bobcat® all-electric compact track loader delivers a work experience unlike anything else. This powerful loader delivers performance that can match or improve upon its diesel-powered counterparts with unprecedented quiet operation and monthly maintenance savings.





## WORK VIRTUALLY ANYWHERE.

With emissions-free operation, you can truly go where the work is. That includes all the outdoor jobsites where you're already accustomed to using a compact track loader.

- Tackle tough jobs indoors where the alternative is intensive, costly manual labor.
- Work confidently in food processing facilities and other emissions-prohibitive environments.
- Extend operating hours on some sites where noise restrictions can otherwise limit work hours.

## GENERATE NEW BUSINESS OPPORTUNITIES.

This machine can also generate new business among a growing number of private companies, government agencies and individuals who choose to support eco-friendly construction practices and environmental, social and governance (ESG) principles.

## OPERATING IS BELIEVING.

Bobcat all-electric loaders are challenging what people think about electric-powered compact equipment.

**"I was impressed. Completely impressed with it."**

*See operators react to the T7X.*



## LEADING THE CHARGE IN ELECTRIC-POWERED INNOVATION

**The Bobcat legacy for advancing compact equipment continues with numerous industry awards and global recognition for electric innovation.**



Fast Company's World  
Changing Ideas: Transportation

Compact Equipment's  
Innovative Iron Awards

Contractors' Top New  
Products Award

CES 2022 Innovation Award

Construction Equipment's  
Top 100 Products of 2022

Choice Awards 2022

# THE MORE CONFIGURABLE, MORE PRODUCTIVE WORK MACHINE

The exceptional design and unique features of this truly all-electric compact track loader – along with cutting-edge software – help operators get work done in more places and in less time.



### ON-DEMAND MULTI-FUNCTIONING PERFORMANCE

With the T7X, you can simultaneously power the drive, lift and tilt functions without the noticeable power lag that is common among diesel-hydraulic machines.

### NO HYDRAULICS

Unlike other compact loaders, the T7X doesn't rely on hydraulic systems to transfer power to the machine's work group. A simple electrical drive system delivers precise power for every load, making it much more power-efficient than hydraulic systems.

### HOURS OF CONTINUOUS RUNTIME

Your all-electric Bobcat loader is powered by a 72.6-kilowatt-hour lithium-ion battery. On a single charge, you'll get up to six hours of continuous runtime on the T7X compact track loader.

### UNPARALLELED OPERATOR EXPERIENCE

This loader takes the Bobcat reputation for leading operator comfort to a whole new level. The T7X offers drastically reduced noise and less vibration, which both operators and jobsite bystanders will enjoy.



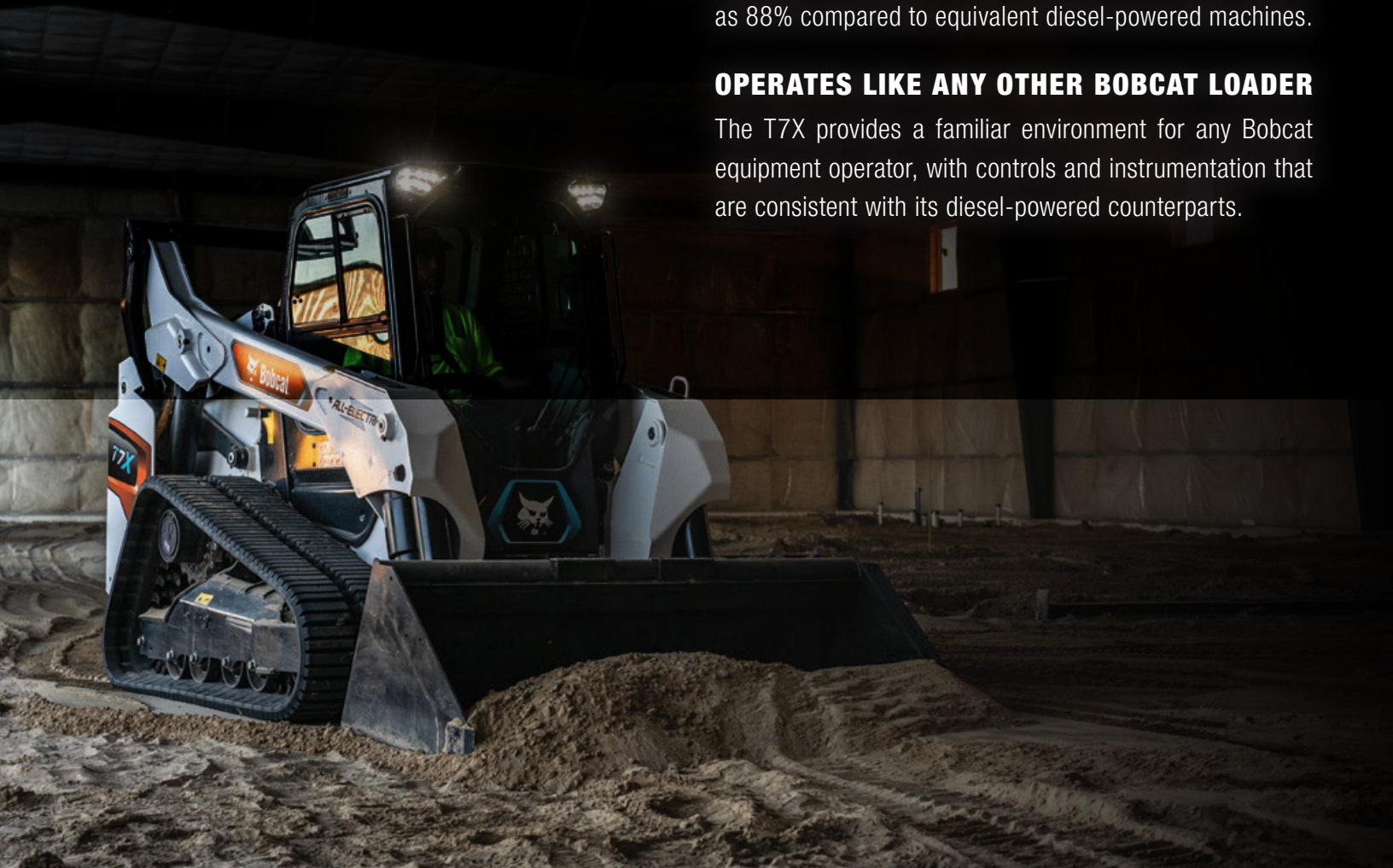


## MINIMAL SERVICE AND MAINTENANCE

With fewer parts, simple componentry and a fraction of the fluid, you'll drastically reduce maintenance and simplify troubleshooting. Just charge, grease and go! You'll reduce long-term maintenance and operation costs by as much as 88% compared to equivalent diesel-powered machines.

## OPERATES LIKE ANY OTHER BOBCAT LOADER

The T7X provides a familiar environment for any Bobcat equipment operator, with controls and instrumentation that are consistent with its diesel-powered counterparts.



## FUEL SAVINGS

Compare fuel prices to the average cost of a full battery charge. You'll quickly see how all-electric loaders greatly reduce the overall cost of operating a compact loader.

## FEATURE-RICH SOFTWARE CAPABILITIES

Wireless software connectivity and updates go well beyond traditional loaders. Access machine data produced as it works and use it to change preferences or tune performance to your specific needs.





# GETTING STARTED WITH THE T7X

While nothing compares to getting into the machine and experiencing it for yourself, these handy videos will show you how this quiet, powerful machine will fit seamlessly into your workday.



### HOW TO CHARGE

Get a few pointers on the T7X charging process, including an overview of charging-cable indicators that will help you quickly and easily power up your machine.



### HOW TO OPERATE

The T7X operates just like any other Bobcat loader, with a few extra power management options in the cab. Watch our video to take a look at its familiar, intuitive controls and instrumentation.



### DISPLAY OVERVIEW

Get a brief walk-through of icons, indicators and features that help you control key functions and operate your T7X loader efficiently.

## OTHER ELECTRIC INNOVATIONS FROM BOBCAT

### Battery-Electric Compact Excavators

Along with all-electric compact loaders, Bobcat introduced battery-powered E10e and E19e compact excavators that deliver full torque regardless of rpm, providing top productivity, smooth hydraulic control and on-demand multi-functioning performance with no noticeable power drop.

### Electric Forklifts

- Four models offer power and sustainability for many applications
- Reliable AC drive system and low maintenance

### ZT6000e Zero-Turn Mower

- Includes premium AirFX™ cutting system for razor-sharp, uniform results
- Offers up to eight hours of runtime and mows up to 23.8 acres on a single charge



# SPECIFICATIONS



## PLUGGED INTO ATTACHMENT PRODUCTIVITY

Numerous non-hydraulic Bobcat attachments are compatible with the T7X's Bob-Tach® mounting system.

## PROTECTION FOR YOUR POWER SOURCE

Switch on predictable peace of mind. The Bobcat T7X comes with a standard 2-year and 2,000-hour warranty.



MODEL		T7X
PERFORMANCE	Horsepower	100.0 hp (74.5 kW)
	Rated Operating Capacity (35% of tipping load)	3056 lb. (1386 kg)
	Tipping Load	8743 lb. (3965 kg)
	Lift Arm Path	Vertical
	Operating Weight	12,590 lb. (5710 kg)
	Breakout Force – Lift	8118 lb. (3682 kg)
	Breakout Force – Lift – Machine Limitation (hyd/tip)	Tip
	Breakout Force – Tilt	8218 lb. (3727 kg)
	Travel Speed – Single Speed	5.7 mph (9.1 km/hr.)
	Travel Speed – 2-Speed High	8.7 mph (14.0 km/hr.)
POWER	Battery Type	Lithium Ion
	Gross Battery Capacity	72.6 kWh
	System Voltage	336-465 VDC
	Motor Type	Permanent Magnet (Brushless)
EMISSIONS	CO2 Emissions	NONE
SOUNDS & VIBRATION	Bystander Noise Level per ISO 6396/ISO 4871	92.7 dB
	Operator Position Noise Level per ISO 6396/ISO 4871	65.4 dB
FLUID CAPACITIES	Fuel/Cooling Fluids	NONE
	Engine Oil With Filter Change Fluids	NONE
	Engine Cooling System With Heater Fluids	NONE
	Engine Cooling System Without Heater Fluids	NONE
	Hydraulic/Hydrostatic Reservoir Fluids	NONE
	Drive Motor Brake Cavity (each) Fluids	.25 gal. (1 qt)
	Electronics Coolant (environmentally friendly propylene glycol) Fluids	2.0 gal. (8.0 qt)
	Battery Coolant (environmentally friendly propylene glycol) Fluids	2.75 gal. (11.0 qt)
	Air Conditioning Refrigerant (R-134a) Fluids	2.0 lb. (0.9 kg)

Bobcat all-electric compact loaders are compatible with many non-hydraulic Bobcat attachments that work with the Bob-Tach system. We are working on developing a line of all-electric attachments in the future.





**Bobcat®**

Certain specification(s) are based on engineering calculations and are not actual measurements. Specification(s) are provided for comparison purposes only and are subject to change without notice. Specification(s) for your individual Bobcat equipment will vary based on normal variations in design, manufacturing, operating conditions, and other factors.



**Bobcat Company is a member of the Doosan Group.** Doosan is a global leader in construction, grounds maintenance and material handling equipment, power and water solutions, and engineering that has proudly served customers and communities for more than a century. Bobcat®, the Bobcat logo and the colors of the Bobcat machine are registered trademarks of Bobcat Company in the United States and various other countries. ©2025 Bobcat Company. All rights reserved.

**BOBCAT COMPANY • 250 EAST BEATON DRIVE • WEST FARGO, ND 58078 • [BOBCAT.COM](http://BOBCAT.COM)**

**DOOSAN**

**B-2191 (01/25)**  
EP-2M-0125-19079-F