



IMPLEMENTS & ATTACHMENTS

FOR TRACTORS





PUT ANY JOB **BEHIND YOU.**

Bobcat® compact tractor implements and attachments offer broad versatility for landscaping, building and grounds maintenance, general maintenance on farms and ranches, and a wide variety of projects around the home. You're a quick hookup away from all kinds of possibilities, like preparing sites with the Bobcat box blade, maintaining grounds and parks with the finish mower, or taking care of general maintenance with the front-end loader, tine rake or auger.

Machine: CT2540
Attachment: Bucket
Implement: Angle Blade



IMPLEMENTS

3-POINT AUGER

Ideal for general digging applications, the auger's unique design and heavy-duty construction allow you to drill holes fast with plumb-line accuracy. Equipped with Category 1 hitch pins and a 2-inch-diameter reinforced boom and yoke. Maximum operating speed 300 rpm.

Model	Auger 3 pt.
Output Shaft	2.0 in. (51 mm)
Main Frame Material	3.0 in. Steel Tubing
Driveline	Shear-Bolt Protected
Auger Bits	6.0 in. (152 mm), 9.0 in. (229 mm), 12.0 in. (305 mm)
Tractor Requirements (PTO)	20.0-60.0 hp (14.9-44.7 kW)
Hitch Category	Category 1
Weight	140 lb. (63 kg)



3-POINT SNOWBLOWER

Bobcat 3-point snowblowers are perfect for clearing driveways, sidewalks or even parking lots. These snowblowers function from the rear PTO and 3-point hitch of the tractor. They are powerful, productive and easy to operate. Chute rotation is achieved by a manual chute rotator that is accessible from the tractor operating station or by an optional hydraulic chute rotator that works great for a compact tractor with a cab.

Model	SB50	SB60	SB66	SB74
Cutting Width	50.0 in. (1270 mm)	60.0 in. (1524 mm)	66.0 in. (1676 mm)	74.0 in. (1880 mm)
Snow Intake Height	21.6 in. (549 mm)	21.6 in. (549 mm)	21.6 in. (549 mm)	21.6 in. (549 mm)
Auger Diameter	14.0 in. (356 mm)	14.0 in. (356 mm)	14.0 in. (356 mm)	14.0 in. (356 mm)
Fan Diameter	18.9 in. (480 mm)	18.9 in. (480 mm)	18.9 in. (480 mm)	18.9 in. (480 mm)
Max. Chute Rotation	230°	230°	230°	230°
Chute Rotation Design (optional)	Manual	Manual (Hydraulic)	Manual (Hydraulic)	Manual (Hydraulic)
Skid Shoes	Adjustable	Adjustable	Adjustable	Adjustable
Weight	493 lb. (224 kg)	529 lb. (240 kg)	593 lb. (269 kg)	629 lb. (285 kg)
Tractor PTO Speed	540 rpm	540 rpm	540 rpm	540 rpm
3-Point Hitch Size	Category 1	Category 1	Category 1	Category 1
Driveline Protection	Shear Bolt	Shear Bolt	Shear Bolt	Shear Bolt



ANGLE BLADE

The Bobcat angle blade is built with productivity in mind – making this one of the most versatile blades around. A reversible cutting edge, blade angling and blade offset make this an ideal blade for ditch digging, maintaining roads, removing snow or site landscaping applications.

Model	AB60	AB72	AB84	AB96
Overall Width	60.0 in. (1524 mm)	72.0 in. (1829 mm)	84.0 in. (2134 mm)	96.0 in. (2438 mm)
Cutting Edge	Reversible	Reversible	Reversible	Reversible
Overall Height	38.0 in. (965 mm)	38.0 in. (965 mm)	38.0 in. (965 mm)	38.0 in. (965 mm)
Overall Length	40.0 in. (1016 mm)	40.0 in. (1016 mm)	40.0 in. (1016 mm)	40.0 in. (1016 mm)
Blade Height	15.0 in. (381 mm)	15.0 in. (381 mm)	15.0 in. (381 mm)	15.0 in. (381 mm)
Hitch Category	Category 1	Category 1	Category 1	Category 1
Blade Angling	Manual (5 Pin Positions)	Manual (5 Pin Positions)	Manual (5 Pin Positions)	Manual (5 Pin Positions)
Weight	308 lb. (140 kg)	332 lb. (151 kg)	348 lb. (158 kg)	380 lb. (172 kg)



BALLAST BOX (REAR)

Maximize lifting capabilities by properly ballasting the rear of the tractor. The rear ballast box is easily removed when you plan to use other implements. Its compact size enables convenient storage when not in use.

Model	Rear Ballast	Rear Ballast With Extension Kit
Overall Height	29.0 in. (737 mm)	41.2 in. (1046 mm)
Overall Width	35.5 in. (902 mm)	35.5 in. (902 mm)
Empty Weight	230 lb. (104 kg)	350 lb. (158 kg)
Max. Weight	950 lb. (431 kg)*	1558 lb. (706 kg)**
3-Point Hitch	Category 1	Category 1

*Max. weight includes 16 in. of dry sand, and suitcase weight kit with four weights.

**Max. weight includes 40 in. of dry sand.



BALE SPEAR

The 3-point bale spear is the perfect tool for handling large, heavy hay bales. Featuring a 42-inch spear and two stabilizing spikes, this attachment securely lifts and moves bales weighing up to 2,200 pounds while preventing rotation. Its tapered tine design enhances stability, ensuring smooth and controlled operation for livestock feeding, bale storage and field cleanup.

Model	Bale Spear 3 pt.
Operating Weight	72 lb. (32 kg)
Main Spear Length	42.0 in. (1066 mm)
Secondary Spear Length	10.0 in. (254 mm)
Overall Length	31.0 in. (787 mm)
Overall Height	25.0 in. (635 mm)



BOX BLADE

For rough grading and landscape applications the Bobcat box blade has a 4x4-inch mainframe. Double-lug lower hitch points ensure top performance and reliability. Shearing action is provided by two reversible high-carbon steel cutting edges. Operates in forward or reverse. Scarifier allows a maximum working depth of 4 inches.

Model	48	60	72	84	96
Overall Width	50.0 in. (1270 mm)	61.5 in. (1562 mm)	73.5 in. (1867 mm)	85.5 in. (2171 mm)	97.5 in. (2476 mm)
Cutting Edges (2)	48.0 in. (1219 mm) (Reversible)	60.0 in. (1524 mm) (Reversible)	72.0 in. (1829 mm) (Reversible)	84.0 in. (2133 mm) (Reversible)	96.0 in. (2438 mm) (Reversible)
Height	32.0 in. (813 mm)	33.0 in. (838 mm)	33.0 in. (838 mm)	34.0 in. (863 mm)	34.0 in. (863 mm)
Overall Length	28.0 in. (711 mm)	31.0 in. (787 mm)	31.0 in. (787 mm)	28.0 in. (711 mm)	28.0 in. (711 mm)
Tractor Requirements	18.0-26.0 hp (13.4-19.4 kW)	20.0-60.0 hp (14.9-44.7 kW)	35.0-60.0 hp (26.0-44.7 kW)	40.0-60.0 hp (29.8-44.7 kW)	45.0-60.0 hp (33.6-44.7 kW)
Hitch Category	Category 1	Category 1	Category 1	Category 1	Category 1
Digging Shanks	4 (Adjustable/ Replaceable)	5 (Adjustable/ Replaceable)	6 (Adjustable/ Replaceable)	6 (Adjustable/ Replaceable)	7 (Adjustable/ Replaceable)
Weight	360 lb. (163 kg)	418 lb. (189 kg)	474 lb. (215 kg)	495 lb. (224 kg)	587 lb. (266 kg)



FINISH MOWER

Ideal for keeping lawns, estates, school grounds and parks looking their best. Both models come standard with rear discharge and solid rubber wheels. Blades travel at speeds up to 92.6 meters per second for a clean, smooth cut without skips in a variety of applications.

Model	60	72
Cutting Width	60.0 in. (1524 mm)	72.0 in. (1829 mm)
Cutting Height	1.0-4.0 in. (25-101 mm)	1.0-4.0 in. (25-101 mm)
Blades	3	3
Tractor Requirements (PTO)	23.0-40.0 hp (17.1-29.8 kW)	32.0-40.0 hp (23.8-29.8 kW)
Hitch Category	Category 1	Category 1
Gear Box	Closed (540 rpm)	Closed (540 rpm)
Weight	418 lb. (189 kg)	495 lb. (224 kg)



FLEX WING ROTARY CUTTER

Get heavy-duty performance for mowing and vegetation clearing with the flex wing rotary cutter. Available in 12- and 15-foot widths, it's ideal for roadside mowing, pasture maintenance and ditch cleanup. The high-velocity blades cut material up to 3 inches in diameter, while the flex wing design ensures smooth operation on uneven terrain. With powerful gearboxes, slip clutch protection, a stump jumper and a constant velocity PTO shaft, this rotary cutter maximizes durability and efficiency for large-scale land management.

Model	CFW 12	CFW 15
Cutting Width	144.0 in. (3657 mm)	180.0 in. (4572 mm)
Cutting Height Range	1.5-13.0 in. (38-330 mm)	2.0-15.0 in. (50-381 mm)
Cutting Capacity	3.0 in. (76 mm)	3.0 in. (76 mm)
Divider Gearbox	160.0 hp (119.3 kW)	160.0 hp (119.3 kW)
Wing and Center Gearbox	120.0 hp (89.4 kW)	120.0 hp (89.4 kW)
Deck Thickness	10 gauge	10 gauge



IMPLEMENTS

QUICK HITCH

With the quick hitch adapter, you can connect a variety of implements in seconds. Back up your tractor, lift up your quick hitch-compatible implement and secure the top levers. You're ready to work.

Model	Category 1
Inside Hooks (distance)	27.2 in. (692 mm)
Outside Hooks (distance)	29.5 in. (749 mm)
Weight	76 lb. (34 kg)



ROTARY CUTTER

Handle your tough grass and brush-clearing applications or mulch small branches and saplings. The rotary cutter is ideal for clearing undeveloped property, trails and ditches.

Model	RC48CT	RC60CT	RC72CT
Overall Width	51.0 in. (1295 mm)	64.0 in. (1625 mm)	75.0 in. (1905 mm)
Cutting Width	48.0 in. (1219 mm)	60.0 in. (1524 mm)	72.0 in. (1829 mm)
Cutting Height	1.5-9.0 in. (38-229 mm)	1.5-9.0 in. (38-229 mm)	1.5-9.0 in. (38-229 mm)
Overall Length	77.0 in. (1956 mm)	86.0 in. (2185 mm)	93.0 in. (2362 mm)
Deck Type	Single	Single	Single
Deck Thickness	12 ga.	12 ga.	12 ga.
Driveline	Shear Bolt	Shear Bolt	Shear Bolt
Tractor Requirements (PTO)	18.0-45.0 hp (13.4-33.6 kW)	20.0-50.0 hp (14.9-37.3 kW)	25.0-65.0 hp (18.6-48.5 kW)
Hitch Category	Category 1	Category 1	Category 1
Blades	2	2	2
Gear Box (hp rating)	45.0 hp (33.5 kW)	45.0 hp (33.5 kW)	45.0 hp (33.5 kW)
Weight	463 lb. (210 kg)	530 lb. (241 kg)	623 lb. (282 kg)



SEEDER

Unlike broadcast seeders, the Bobcat seeder implement is a ground-driven unit that seeds directly into the soil for better germination and more accurate coverage.

Model	72SDR
Overall Width	88.0 in. (2235 mm)
Working Width	72.0 in. (1828 mm)
Overall Height	44.0 in. (1117 mm)
Length	37.0 in. (940 mm)
Weight (empty)	1300 lb. (589 kg)
Weight (full)	1425 lb. (646 kg)
Hopper Capacity	4.0 bu. (8601 cu. in.)



TILLER

Break ground; prepare soil for planting; amend soil with fertilizer, manure or mulch; and remove weeds between tree rows. Bobcat tiller tines rotate in the opposite direction as the tires when the tractor is moving forward and cover the tire tracks for a consistent finish, eliminating tiller side-shifting and reducing the need for more than one pass to complete work. Features adjustable skid shoes for various working depths up to 7 inches.

Model	T48	T60	T72	T84
Overall Width	51.5 in. (1308 mm)	64.0 in. (1626 mm)	76.0 in. (1930 mm)	88.0 in. (2235 mm)
Tilling Width	46.5 in. (1181 mm)	58.8 in. (1493 mm)	72.0 in. (1829 mm)	84.0 in. (2133 mm)
Height	38.0 in. (965 mm)	38.0 in. (965 mm)	38.0 in. (965 mm)	30.0 in. (762 mm)
Overall Length	28.0 in. (711 mm)	28.0 in. (711 mm)	28.0 in. (711 mm)	28.0 in. (711 mm)
Driveline	Gear Driven-Oil Bath	Gear Driven-Oil Bath	Gear Driven-Oil Bath	Gear Driven-Oil Bath
Tractor Requirements (PTO)	15.0-35.0 hp (540 rpm)	25.0-50.0 hp (540 rpm)	30.0-55.0 hp (540 rpm)	40.0+ hp (540 rpm)
Hitch Category	Limited Category 1	Category 1	Category 1	Category 1/Category 2
Tines	Heat Treated/Self Sharp.	Heat Treated/Self Sharp.	Heat Treated/Self Sharp.	Heat Treated/Self Sharp.
Rotation	Forward or Reverse	Forward or Reverse	Forward or Reverse	Forward or Reverse
Depth Runners	1.0-7.0 in. (25-178 mm)	1.0-7.0 in. (25-178 mm)	1.0-7.0 in. (25-178 mm)	1.0-7.0 in. (25-178 mm)
Weight	465 lb. (211 kg)	638 lb. (289 kg)	718 lb. (326 kg)	800 lb. (362 kg)



Consult your local Bobcat dealer for proper setup of the tiller for 3-point hitch operation.

IMPLEMENTS

TINE RAKE

Rakes and collects surface debris as it levels the soil. Exceptionally strong and durable, the rake can be angled or reversed simply by relocating the index pin. Tines are individually replaceable for easy, low-cost maintenance.

Model	60	72	84	96
Overall Width	60.0 in. (1524 mm)	72.0 in. (1829 mm)	84.0 in. (2134 mm)	96.0 in. (2438 mm)
Tines (curved)	High Carbon (Replaceable)	High Carbon (Replaceable)	High Carbon (Replaceable)	High Carbon (Replaceable)
Overall Height	39.0 in. (991 mm)	39.0 in. (991 mm)	39.0 in. (991 mm)	39.0 in. (991 mm)
Overall Length	42.0 in. (1067 mm)	42.0 in. (1067 mm)	42.0 in. (1067 mm)	42.0 in. (1067 mm)
Hitch Category	Category 1	Category 1	Category 1	Category 1
Angling	Manual (360°)	Manual (360°)	Manual (360°)	Manual (360°)
Weight	248 lb. (112 kg)	272 lb. (123 kg)	287 lb. (130 kg)	483 lb. (219 kg)



ATTACHMENTS

BACKHOE

Turn your Bobcat compact tractor into a powerful part-time excavator with this handy attachment. With three different models ranging from about 6 to 8 feet of dig depth, the backhoe is great for general purpose digging and trenching. Sub frame included.

Model	BH66	BH76	BH86	BH86-5
Digging Depth (2 ft. flat bottom)	73.1 in. (1857 mm)	89.8 in. (2281 mm)	94.3 in. (2397 mm)	94.3 in. (2397 mm)
Reach From Center Line of Swing Pivot	99.8 in. (2537 mm)	121.1 in. (3076 mm)	125.3 in. (3184 mm)	125.3 in. (3184 mm)
Loading Height (bucket at 60°)	54.6 in. (1389 mm)	74.0 in. (1880 mm)	76.3 in. (1939 mm)	76.3 in. (1939 mm)
Max. Leveling Angle	8°	8°	10°	10°
Swing Arc	180°	180°	180°	180°
Max. Transport Height	63.3 in. (1608 mm)	83.2 in. (2114 mm)	86.6 in. (2199 mm)	86.6 in. (2199 mm)
Bucket Rotation	152°	180°	170°	170°
Stabilizer Spread (down position)	78.4 in. (1992 mm)	78.0 in. (1982 mm)	73.3 in. (1862 mm)	73.3 in. (1862 mm)
Stabilizer Spread (up position)	60.2 in. (1530 mm)	65.0 in. (1651 mm)	69.0 in. (1752 mm)	69.0 in. (1752 mm)
Bucket Digging Force	2240 lbf. (9964 N)	3075 lbf. (13,678 N)	3532 lbf. (15,711 N)	3532 lbf. (15,711 N)
Operating Pressure	1885 psi (130 bar)	2249 psi (155 bar)	2249 psi (155 bar)	2249 psi (155 bar)
Shipping Weight (without bucket)	756 lb. (343 kg)	880 lb. (399 kg)	1102 lb. (499 kg)	1102 lb. (499 kg)



BALE FORK

Spend less time hauling bales and more time attending to your livestock. The bale fork lifts, hauls and stacks hay bales easily and efficiently. Two small-diameter forks mounted on the frame penetrate densely compacted bales, stabilizing the load by balancing round bales and preventing bale rotation.

Model	Bale Fork
Overall Spear Length	43.7 in. (1111 mm)
Protruding Spear Length	38.5 in. (977 mm)



BRUSH GRAPPLE

Lightweight but tough, the Bobcat grapple uses more of your tractor's lift capacity to lift and handle material. Clear brush and tree limbs, lift and pile odd-shaped materials, and get a tight hold on hard-to-handle objects.

Model	48	60	77
Operating Weight	205 lb. (93 kg)	415 lb. (188 kg)	943 lb. (427 kg)
Grapple Width	49.1 in. (1247 mm)	60.0 in. (1524 mm)	77.0 in. (1955 mm)
Number of Grapple Tines	6	5	6
Number of Forks	3	3	4
Open Height	37.1 in. (942 mm)	42.1 in. (1069 mm)	52.4 in. (1330 mm)
Closed Height	32.8 in. (832 mm)	38.8 in. (985 mm)	54.0 in. (1371 mm)



ATTACHMENTS

FRONT-END LOADER

The front-end loader is a must-have for digging, dirt moving, loading and carrying material. The Bobcat front-end loader is easy to attach and remove, plus it delivers leading lift capacity and height for exceptional productivity.

Model	FL6	FL7	FL8	FL9	FL9-5	FL10
Max. Lift Height to Pivot Pin	71.9 in. (1826 mm)	95.1 in. (2418 mm)	99.6 in. (2530 mm)	104.6 in. (2658 mm)	108.6 in. (2760 mm)	129.0 in. (3276 mm)
Max. Lift Height Under Level Bucket	65.0 in. (1650 mm)	86.1 in. (2187 mm)	90.5 in. (2299 mm)	95.2 in. (2419 mm)	100.6 in. (2555 mm)	120.7 in. (3065 mm)
Clearance With Bucket Dumped	50.1 in. (1274 mm)	72.1 in. (1832 mm)	75.2 in. (1912 mm)	77.0 in. (1958 mm)	80.6 in. (2049 mm)	99.7 in. (2532 mm)
Reach at Max. Lift Height	14.1 in. (359 mm)	7.0 in. (177 mm)	5.1 in. (131 mm)	10.5 in. (269 mm)	7.5 in. (189 mm)	17.5 in. (444 mm)
Max. Dump Angle	57°	50°	52°	51°	59°	51°
Reach With Bucket on Ground	52.6 in. (1336 mm)	58.7 in. (1493 mm)	62.6 in. (1590 mm)	68.0 in. (1727 mm)	70.2 in. (1783 mm)	78.0 in. (1981 mm)
Max. Rollback Angle	22°	36°	32°	36°	37°	47°
Digging Depth	4.3 in. (110 mm)	4.4 in. (112 mm)	5.5 in. (141 mm)	7.8 in. (200 mm)	6.4 in. (162 mm)	9.8 in. (248 mm)
Lift Capacity at Pivot Pin (max. height)	608 lb. (276 kg)	1369 lb. (621 kg)	1389 lb. (630 kg)	1795 lb. (814 kg)	2346 lb. (1064 kg)	2614 lb. (1185 kg) (UT6066 and UT6566) 2813 lb. (1275 kg) (UT6573 only)
Breakout Force at Pivot Point	1554 lb. (705 kg)	2575 lb. (1168 kg)	3285 lb. (1490 kg)	4136 lb. (1876 kg)	4524 lb. (2052 kg)	4558 lb. (2067 kg) (UT6066 and UT6566) 4628 lb. (2099 kg) (UT6573 only)
Weight	606 lb. (275 kg)	915 lb. (415 kg)	1070 lb. (485 kg)	1202 lb. (545 kg)	1400 lb. (635 kg)	1690 lb. (766 kg)
Bucket Width	48.0 in. (1220 mm)	59.8 in. (1520 mm)	59.8 in. (1520 mm)	66.0 in. (1676 mm)	72.0 in. (1829 mm)	82.0 in. (2082 mm)



FRONT-MOUNT AUGER

When you need high torque for fast, precise hole digging, look to the auger attachment. Compatible with utility tractors, it ensures plumb-line accuracy for a variety of applications. With multiple bit types and teeth available, you can match the auger to your specific digging conditions for optimal efficiency and performance.

Model	12PH
Operating Weight	140 lb. (64 kg)
Width	10.0 in. (254 mm)
Height	27.7 in. (704 mm)
Dig Depth (without extensions)	56.0 in. (1422 mm)
Operating Weight (without bit)	234 lb. (106 kg)
Shaft Diameter - Hex	2.0 in. (50 mm)



Machine: UT6573
Attachment: Brush Grapple

Unlock your tractor's versatility even further with the front-end loader and standard quick attach mounting system.

FRONT-MOUNT SNOWBLOWER

The front-mount snowblower gives you powerful snow-clearing ability with the convenience of a quick attach mount. Powered by your tractor's mid-mount PTO* (mid-mount PTO required), this attachment cuts a wide path through deep, heavy snow. Having the snowblower mounted to the front of the tractor offers greater operator comfort. Direct snow exactly where you want it with the hydraulic chute rotation.

*Front lift kit and PTO driveline kit are required for operation of the front-mount snowblower attachment.

Model	FSB49	FSB62	FSB72
Overall Width	51.4 in. (1305 mm)	64.4 in. (1635 mm)	73.7 in. (1873 mm)
Cutting Width	49.0 in. (1244 mm)	62.0 in. (1575 mm)	72.0 in. (1828 mm)
Cutting Height (blower on the ground)	21.0 in. (532 mm)	21.0 in. (532 mm)	24.5 in. (622 mm)
Auger Diameter	12.0 in. (305 mm)	12.0 in. (305 mm)	14.0 in. (356 mm)
Fan Diameter	14.0 in. (356 mm)	14.0 in. (356 mm)	20.0 in. (508 mm)
Chute Rotation (hydraulic)	227°	227°	230°
Deflector Adjustment (manual)	90°	90°	90°
Weight	353 lb. (160 kg)	385 lb. (175 kg)	620 lb. (282 kg)
Drive	Mid-PTO	Mid-PTO	Mid-PTO
Driveline Protection	Shear Bolt	Shear Bolt	Shear Bolt
Recommended HP Range	20.0-25.0 hp (14.9-18.6 kW)	20.0-35.0 hp (14.9-26.0 kW)	45.0-60.0 hp (33.5-44.7 kW)
Cutting Edge Design	Reversible/Replaceable	Reversible/Replaceable	Reversible/Replaceable
Cutting Edge Dimensions	0.25 x 4.5 in. Steel (6 x 114 mm Steel)	0.25 x 4.5 in. Steel (6 x 114 mm Steel)	0.5 x 4.0 in. Steel (12 x 101 mm Steel)
Skid Shoes	Adjustable/Replaceable 3/8 in. Steel (9 mm Steel)	Adjustable/Replaceable 3/8 in. Steel (9 mm Steel)	Adjustable/Replaceable 3/8 in. Steel (9 mm Steel)
Blower Design	Two Stage	Two Stage	Two Stage



HEAVY-DUTY BUCKET

The heavy-duty bucket attachment is built to deliver unmatched strength, durability and precision for demanding jobsites. Designed for compatibility with utility tractors, it allows operators to cut grades, flatten work areas and scrape material off hard surfaces. Its cast mounting frame enhances longevity, ensuring a longer service life, even in tough conditions. With excellent visibility to the cutting edge, operators can work with greater accuracy, making every job more productive.

Model	80
Operating Weight	578 lb. (262 kg)
Length	36.6 in. (929 mm)
Width	80.0 in. (2032 mm)
Height	21.3 in. (541 mm)
Number of Teeth	8 Bolt-On
ISO Heaped Capacity	20.1 ft³ (0.57 m³)
ISO Struck Capacity	14.7 ft³ (0.42 m³)
Predrilled For	Bolt-On Edges or Teeth



LIGHT MATERIAL BUCKET

The light material bucket attachment is designed for high-capacity material handling with efficiency. Compatible with utility tractors, this bucket features a high-back design and maximum roll-back, along with thick, sturdy side walls for durability and stability. Its large capacity allows operators to move significant volumes of low-density materials such as snow, mulch, fertilizer and grain with minimal spillage. A built-in level indicator enhances operator productivity and ease of use, ensuring optimal performance for various material-handling tasks.

Model	80	86	92	98
Operating Weight	669 lb. (303 kg)	706 lb. (320 kg)	864 lb. (392 kg)	914 lb. (415 kg)
Length	41.6 in. (1057 mm)	41.6 in. (1057 mm)	49.1 in. (1247 mm)	49.1 in. (1247 mm)
Width	80.0 in. (2032 mm)	86.0 in. (2184 mm)	92.0 in. (2337 mm)	98.0 in. (2489 mm)
Height	27.6 in. (701 mm)	27.6 in. (701 mm)	33.6 in. (854 mm)	33.6 in. (854 mm)
ISO Heaped Capacity	29.7 ft³ (0.84 m³)	32.1 ft³ (0.91 m³)	50.2 ft³ (1.42 m³)	53.8 ft³ (1.52 m³)
ISO Struck Capacity	22.5 ft³ (0.64 m³)	24.3 ft³ (0.69 m³)	38.4 ft³ (1.09 m³)	41.0 ft³ (1.16 m³)
Predrilled For	Bolt-On Edges	Bolt-On Edges	Bolt-On Edges	Bolt-On Edges



ATTACHMENTS

MID-MOUNT MOWER

Perfect for a variety of applications, the mid-mount mower cuts grass in areas where maneuverability is tight. Both models include standard side discharge and solid rubber wheels. Features a blade travel speed of 78.2 meters per second smoothly, without skips.

Model	M60	M60-5
Cutting Width	60.0 in. (1524 mm)	60.0 in. (1524 mm)
Cutting Height	1.0-4.0 in. (25-102 mm)	1.0-4.0 in. (25-102 mm)
Transport Height	6.0 in. (153 mm)	6.0 in. (153 mm)
Gear Type	Spiral Bevel	Spiral Bevel
Number of Blades	3	3
Blade Spindle Speed	2888 rpm	2888 rpm
Blade Tip Velocity	78.2 m/s	78.2 m/s
Blade Length	20.4 in. (518 mm)	20.4 in. (518 mm)
Deck Thickness	0.13 in. (3.3 mm)	0.15 in. (3.8 mm)
Total Width	74.1 in. (1992 mm)	74.1 in. (1992 mm)
Total Length	42.6 in. (1082 mm)	39.2 in. (996 mm)
Total Height	13.7 in. (348 mm)	12.8 in. (325 mm)
Weight (60 in. deck with mounting)	374 lb. (170 kg)	380 lb. (172 kg)
Drive Type	U-Joint and V-Belt	U-Joint and V-Belt
Lifting Type	3-Point Hitch Links	3-Point Hitch Links
Compatible With Loader	Yes	Yes
Drive Over Deck	Yes	Yes



PALLET FORK

Move bulky, bagged or palletized material quickly and easily with the pallet fork attachment. Adjustable forks load and unload, lift and carry, and move and place materials around a variety of jobsites. Put it to work lifting, carrying and moving to save time on farm chores, fertilizer handling, landscaping and more.

Model	2.5K Standard Duty	4K Heavy Duty
Operating Weight	272 lb. (123 kg)	337 lb. (153 kg)
Width	45.1 in. (1146 mm)	45.1 in. (1146 mm)
Height	34.3 in. (871 mm)	34.3 in. (871 mm)
Fork Width	4.0 in. (102 mm)	4.0 in. (102 mm)
Number of Teeth (Factory)	2	2
Number of Teeth (Possible)	2	2
Frame Weight	122 lb. (55 kg)	153 lb. (69 kg)
Pallet Fork Width	4.0 in. (102 mm)	4.0 in. (102 mm)
Length	42.0 in. (1066 mm)	48.0 in. (1219 mm)



ROCK BUCKET

The skeletal design of the rock bucket collects rocks, debris and other unwanted objects while leaving soil behind. It's great for removing rocks from farm fields, clearing land for landscaping, removing storm debris and other tasks.

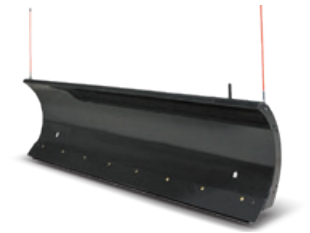
Model	62	68	74
Operating Weight	570 lb. (259 kg)	619 lb. (281 kg)	652 lb. (296 kg)
Length	43.6 in. (1107 mm)	43.6 in. (1107 mm)	43.6 in. (1107 mm)
Width	61.9 in. (1572 mm)	68.6 in. (1742 mm)	75.4 in. (2085 mm)
Height	20.8 in. (528 mm)	20.8 in. (528 mm)	20.8 in. (528 mm)
Tine Thickness	0.4 in. (10 mm)	0.4 in. (10 mm)	0.4 in. (10 mm)



SNOW BLADE

Move piles of snow from sidewalks, driveways, parking lots and more. The Bobcat snow blade brings speed and simplicity to any light or moderate snow removal job. It angles to either side to direct snow where you want it, while blade oscillation keeps you in contact with the surface. A trip moldboard reduces potential damage from striking unseen obstacles.

Model	72	84
Operating Weight	590 lb. (268 kg)	620 lb. (281 kg)
Length	42.0 in. (1067 mm)	42.0 in. (1067 mm)
Width	72.0 in. (1829 mm)	84.0 in. (2134 mm)
Height	28.0 in. (711 mm)	28.0 in. (711 mm)
Cutting Edge (Steel)	0.375 x 6.0 in. (9 x 152 mm)	0.375 x 6.0 in. (9 x 152 mm)
Cylinder Bore	2.0 in. (51 mm)	2.0 in. (51 mm)
Cylinder Rod	1.2 in. (32 mm)	1.2 in. (32 mm)
Cylinder Stroke	9.6 in. (244 mm)	9.6 in. (244 mm)
Working Width (Fully Angled)	63.0 in. (1600 mm)	73.0 in. (1854 mm)
Cylinders	2	2
Optional Rubber Cutting Edge	1.0 x 6.0 in. (25 x 152 mm)	1.0 x 6.0 in. (25 x 152 mm)
Trip Springs	4	4
Degree of Angle Right or Left	30°	30°



UTILITY FORK

Handle bundled material, loose straw, manure and other hard-to-grab materials with the Bobcat utility fork. Strong, replaceable, tapered teeth handle a variety of farm and ranch chores easily and efficiently. Use the exclusive Bob-Tach® mounting system to quickly secure the utility fork to the carrier.

Model	60	66	72
Operating Weight	304 lb. (138 kg)	330 lb. (150 kg)	356 lb. (161 kg)
Length	34.8 in. (884 mm)	34.8 in. (884 mm)	34.8 in. (884 mm)
Width	60.0 in. (1524 mm)	66.0 in. (1676 mm)	72.0 in. (1829 mm)
Height	22.1 in. (561 mm)	22.1 in. (561 mm)	22.1 in. (561 mm)
Number of Teeth (Factory)	8	9	10
Number of Teeth (Possible)	15	17	19
Pallet Fork Width	1.3 in. (34 mm)	1.3 in. (34 mm)	1.3 in. (34 mm)



UTILITY GRAPPLE

The utility grapple bites down and takes hold of manure, bedding, hay, posts and other loose materials. When paired with a fork or bucket, the utility grapple can handle a wide variety of farm and ranch jobs. Its compact design allows you to get the fork or bucket close to fences or sides of stalls to quickly clean up or move material.

Model	55
Operating Weight	243 lb. (110 kg)
Length	34.8 in. (884 mm)
Width	58.0 in. (1473 mm)
Height	29.9 in. (759 mm)
Number of Fork Teeth (Factory)	4
Number of Fork Teeth (Possible)	8
Grapple Width	55.0 in. (1397 mm)
Number of Grapple Tines	4
Open Height	42.3 in. (1074 mm)
Open Length	40.1 in. (1019 mm)
Closed Height	29.9 in. (759 mm)
Closed Length	34.8 in. (884 mm)



TRACTOR IMPLEMENT AVAILABILITY BY MODEL

IMPLEMENTS	CATEGORY	MODEL	CT1021	CT1025	CT2025	CT2035	CT2040	CT2535	CT2540
	3-Point Auger	AUG3PT			●	●	●	●	●
	3-Point Snowblower	SB50	●	●					
		SB60			●	●	●	●	●
		SB66			●	●	●	●	●
		SB74							
	Angle Blade	AB60	●	●	●	●	●	●	●
		AB72			●	●	●	●	●
		AB84			●	●	●	●	●
		AB96							
	Ballast Box (Rear)	3PTBAL	●	●	●	●	●	●	●
	Bale Spear	BS42							
	Box Blade	BB48	●	●					
		BB60			●	●	●	●	●
		BB72			●	●	●	●	●
		BB84							
		BB96							
	Finish Mower	FM60	●	●	●	●	●	●	●
		FM72				●	●	●	●
	Flex Wing Rotary Cutter	12 FT							
		15 FT							
	Quick Hitch	3PTQH	●	●	●	●	●	●	●
	Rotary Cutter	RC48	●	●					
		RC60			●	●	●	●	●
		RC72				●	●	●	●
	Seeder	72"			●	●	●	●	●
	Tiller	T48LD	●	●					
		T60			●	●	●	●	●
		T72					●		●
		T84							
	Tine Rake	TR60	●	●	●	●	●	●	●
		TR72			●	●	●	●	●
		TR84			●	●	●	●	●
		TR96							

CT4045	CT4050	CT4055	CT4058	CT5545	CT5550	CT5555	CT5558	UT6066	UT6566	UT6573
●	●	●	●	●	●	●	●			
●	●	●	●	●	●	●	●			
●	●	●	●	●	●	●	●			
●	●	●	●							
●	●	●	●	●	●	●	●			
●	●	●	●	●	●	●	●			
●	●	●	●	●	●	●	●	●	●	●
●	●	●	●	●	●	●	●	●	●	●
●	●	●	●	●	●	●	●	●	●	●
●	●	●	●	●	●	●	●	●	●	●
●	●	●	●							
●	●	●	●	●	●	●	●			
●	●	●	●	●	●	●	●	●	●	●
								●	●	●
								●	●	●
●	●	●	●	●	●	●	●			
●	●	●	●							
●	●	●	●	●	●	●	●			
●	●	●	●	●	●	●	●			
●	●	●	●							
●	●	●	●							
●	●	●	●	●	●	●	●			
●	●	●	●	●	●	●	●	●	●	●
●	●	●	●	●	●	●	●			
●	●	●	●	●	●	●	●	●	●	●
●	●	●	●	●	●	●	●	●	●	●

TRACTOR ATTACHMENT AVAILABILITY BY MODEL

ATTACHMENTS	CATEGORY	MODEL	CT1021	CT1025	CT2025	CT2035	CT2040	CT2535	CT2540
	Backhoe	BH66	●	●					
		BH76			●	●	●	●	●
		BH86							
		BH86-5							
	Bale Fork	BALE FORK			●	●	●	●	●
	Brush Grapple	48"	●	●					
		60"			●	●	●	●	●
		77"							
	Front-End Loader	FL6	●	●					
		FL7			●				
		FL8				●	●	●	●
		FL9							
		FL9-5							
		FL-10							
	Front-Mount Auger	12PH							
	Front-Mount Snowblower	FSB49	●	●					
		FSB62			●	●	●	●	●
		FSB72							
	Heavy-Duty Bucket	80"							
	Light Material Bucket	80"							
		86"							
		92"							
		98"							
	Mid-Mount Mower	M60	●	●					
		M60-5			●				
	Pallet Fork	2.5K FRAME			●	●	●	●	●
		4K FRAME				●	●	●	●
		2.5K TEETH			●	●	●	●	●
		42" 4K TEETH				●	●	●	●
		48" 4K TEETH				●	●	●	●
	Rock Bucket	62"			●	●	●	●	●
		68"				●	●	●	●
		74"							
	Snow Blade	72"				●	●	●	●
		84"							
	Utility Fork	60"			●	●	●	●	●
		66"			●	●	●	●	●
		72"				●	●	●	●
	Utility Grapple	55"			●	●	●	●	●



Certain specification(s) are based on engineering calculations and are not actual measurements. Specification(s) are provided for comparison purposes only and are subject to change without notice. Specification(s) for your individual Bobcat equipment will vary based on normal variations in design, manufacturing, operating conditions, and other factors.



Bobcat Company is a member of the Doosan Group. Doosan is a global leader in construction, grounds maintenance and material handling equipment, power and water solutions, and engineering that has proudly served customers and communities for more than a century. Bobcat®, the Bobcat logo and the colors of the Bobcat machine are registered trademarks of Bobcat Company in the United States and various other countries. ©2025 Bobcat Company. All rights reserved.

BOBCAT COMPANY • 250 EAST BEATON DRIVE • WEST FARGO, ND 58078 • [BOBCAT.COM](https://www.bobcat.com)

DOOSAN

B-2284 (03/25)
EP-5M-0325-19599-F